



Company Profile

McDONALD STEEL BUILDING PRODUCTS LIMITED



McDonald Steel
Forge Ahead

www.mcdonaldsteelbd.com

Contents

Overview	1
Foreword from the Director	3
Vision	4
Achievements at a Glance	5
MSBPL Policies	7
MSBPL Guiding Principles	11
Management Cycle Matrix	12
Licensed Engineering & Design Softwares	12
MSBPL Steel Fabrication Factories	13
Steel Fabrication Equipments	16
Strategic Global Partners	20
Global Clients	21
Project Profiles	22
Contact	63

Our Overview


McDonald Steel Building Products Limited (MSBPL) is the pioneer of Pre-fabricated structural steel construction in Bangladesh, having started its journey in 1998. Since then, MSBPL has been consistently developing quality steel solutions that have played an integral part in developing Bangladesh's infrastructure.

Equipped with world class machinery and skilled engineer, McDonald Steel realizes unparalleled excellence in helping Bangladesh's growth story in pre-engineered steel building construction. MSBPL is poised to cater to a plethora of projects including power plants, multi-storey building construction, bridges, aviation hangars etc.

Keeping pace with fast evolving construction techniques, in order to address aspects of speed, aesthetics and cost, we have chosen to incorporate automatic fabrication lines from Peddinghaus Corporation USA, Corimpex, Italy and Lincoln, USA and many other international brands.

We import and use the best quality products from Japan, Luxembourg, China and India. Quality is our commitment and only McDonald steel in Bangladesh guarantees the best quality materials and fittings for your steel construction. We have successfully completed over 800 projects in Bangladesh and our clientele ranges from Government agencies to large local and international corporate.



A portrait of Md. Sarwar Kamal, a middle-aged man with a receding hairline, wearing a dark blue suit, a light blue shirt, and a blue patterned tie. He is seated in a brown leather tufted chair, holding a pen over a document. The background features a wooden cabinet with brass handles.

*"The strongest steel
has to go through the
hottest fire."*

Md. Sarwar Kamal
Founder and Managing Director

Foreword from the Director

“In the British era there was common use of robust steel structures, with bridges, railways and warehouses one abounding the empire. They came to lack popularity when a newly independent nation had to balance infrastructures and costs. However- the unaddressed demand remained. The earthquakes that came upon this delta on a fault line and cost millions of lives due to inflexibility of concrete brought to the forefront again, the need for steel- and this time not just for building, but for protecting.

With the demand recognized, and government support received MSBPL in the late 1990s became the pioneer of pre-fabricated steel structures in Bangladesh. Receiving import support from BlueScope Steel (then BHP Australia), the humble beginnings of a trading house saw MSBPL slowly but surely took on more complicated projects- railways, infrastructure development, army and aviation- to a point now where pre-fab steel is a well-established local industry. This journey would not have been possible without the support of our government and our partners- most recently of whom, as of 2013 has included the illustrious Nippon Steel Trading and our combined efforts aim to build a more stable Bangladesh.

As for my management policy, it has not wavered from the founding principles of conviction, honest and sincerity- and as for the future, we hope to become a self-sufficient manufacturer in structural steel from beginning to end.”

Md. Sarwar Kamal

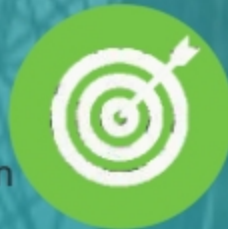
Our Vision

To sustain the leadership in pre-engineered steel building products in Bangladesh and upgrade the industry through our state-of-the-art technology, industry leading expertise and high quality support services.



Our Mission

- To continuously find ways to improve overall industry performance.
- To have respect for and understanding of the people with whom we work.
- To maintain a high level of integrity and open communication in all our relationships.
- To continuously look into innovation to develop the most effective solutions.

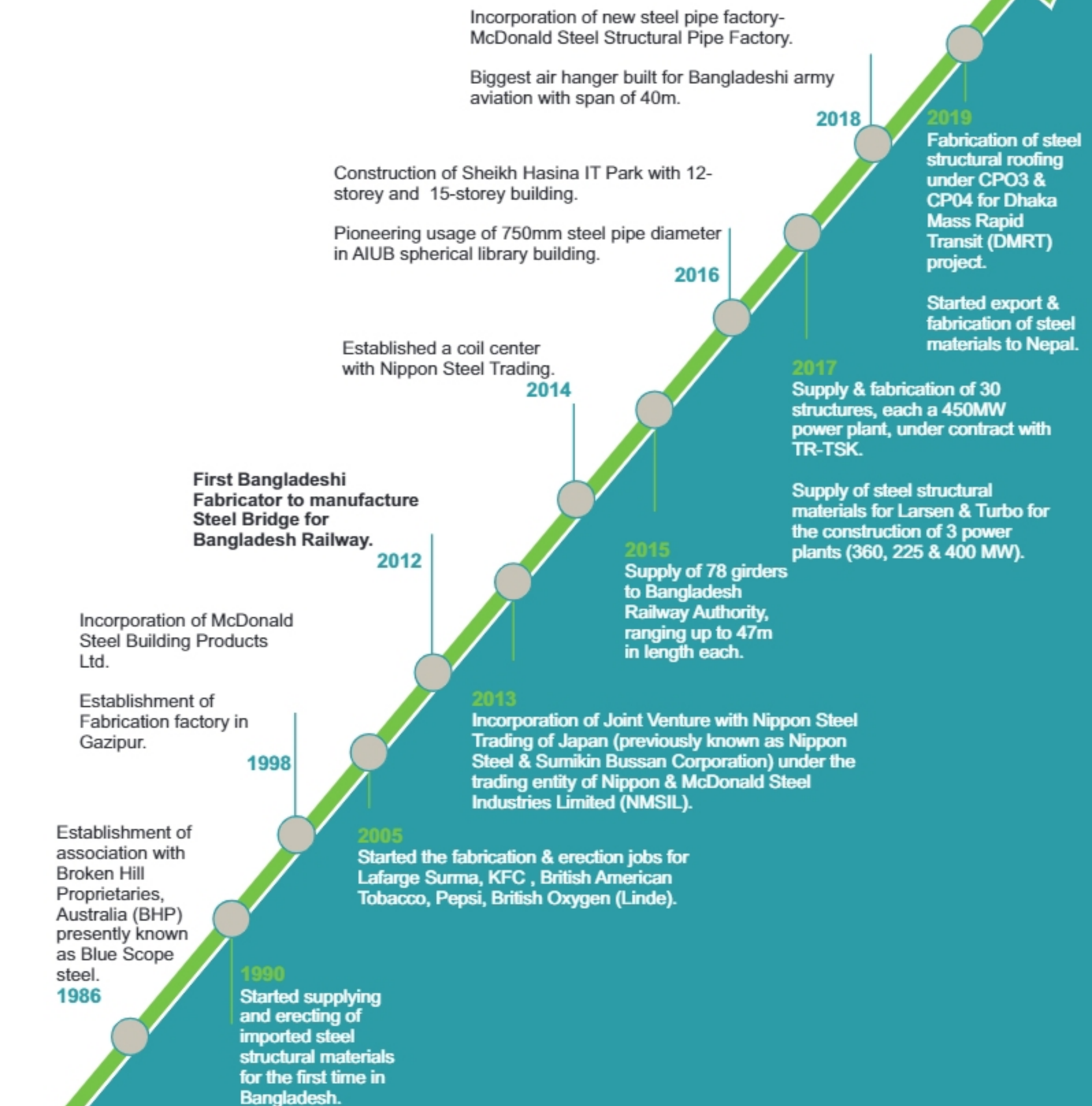


Our Values

- Responsibility
- Innovation
- Teamwork
- Creativity
- Satisfaction
- Delivery
- Excellence
- Pioneering
- Integrity
- Unity



Achievements at a Glance



Nippon Steel & Sumikin Bussan to process steel in Bangladesh

Bangladesh's market for construction steel materials is rather small at several hundred thousand tons a year, but demand for high-quality materials is gradually increasing amid economic growth. The trading company has sold products from Nippon Steel & Sumitomo Metal to McDonald Steel, but with business volume increasing, they decided to set up the joint venture.

Dhaka Tribune

[TODAY'S PAPER](#)
[NEWS](#)
[BUSINESS](#)
[SPORTS](#)
[OPINION](#)
[D2](#)
[SHOW](#)

[Home / Business](#)

Bangladesh, Japanese companies to jointly invest \$59.19m in Mirsarai Economic Zone

Refined Isomers

Published at 11:07 pm September 23rd, 2018



Representatives at the land leasing between IEZA and Japanese companies COURTESY

A total of 2,500 employees will be primarily recruited by the factories

Nippon & McDonald Steel Industries Limited and Nippon Koei of Japan are set to make a joint venture investment worth \$59.19 million on the Mirsarai Economic Zone (EZ) in Bangladesh.

A land lease agreement has also been signed between the Bangladesh Economic Zones Authority (BEZA) and Nippon & McDonald Steel Building Company Limited.

Md Harunur Rashid, executive member of BEZA and Mohammed Sarwar Kamal on behalf of Nippon & McDonald Steel Industries Limited signed the agreement at the BEZA office in Dhaka yesterday.

151068 Key, Stephen D., 2004. *LAKE MICHIGAN: A GUIDE TO THE LAKESIDE WORLD*. Ann Arbor, Michigan: University of Michigan Press. 288 pp., 200 illustrations, 21 cm. \$39.95. ISBN 0 475 08520 9.

SWEDEN, HE IS STILL TUCKER UP WITH JAPANESE GIANT

McDonald Steel ties up with Japanese giant

See also *Figure 4* *SR Model that Estimates the*

State Bariness Review

Officials of McDonald Steel Building Products and Nippon Steel and Sumikin Bussan Corporation pose after signing an agreement to form a new company—Nippon and McDonald Steel Industries Ltd.—at the Nippon headquarters in Tokyo, Japan recently. Photo: MSBPL.

Officials of McDonald Steel Building Products and Nippon Steel and Sumikin Bussan Corporation pose after signing an agreement to form a new company—Nippon and McDonald Steel Industries Ltd.—at the Nippon headquarters in Tokyo, Japan recently. Photo: MSBPI.

Under the agreement signed recently in Tokyo, Japan, a new company named 'Nippon and McDonald Steel Industries Limited' will be formed, which will also engage in export and import trade, supply of processed products, raw materials and related merchandise.

'We are excited to have Nippon as our partner and proud to welcome them in Bangladesh. This partnership allows both the companies to build on each other's strengths', Mazumder Sunit Chandra, managing director of Nippon and McDonald Steel Industries Limited, said in a statement.

শেয়ার বিজ্ঞ
সুখাদেব নারায়ণ উদ্যোগ

संक्षेपः

গাজীপুরে স্টিল স্ট্রাকচার ফেব্রিকেশন কারখানা উদ্বোধন

2007 2008



अतिथि, सजीवू: राजीवराज साठ वसंतपूर गावसुद्धात घडकळामात पिन घेऊन येथिक्कल काढायात येथील सदा घडकळ। घडकळ सृष्टीकळार पिन अतिथी कळत लघाम कळुयार लघाम अतिथि विघन २ काढायात येथील काढाम।

এ সময় কাজল রচয়িতা মনুজেন্দ্র বসন্ত, ঢাকা মেট্রো কলেজের প্রোগ্রামার নির্মাণ করা অন্তর্যাকর্ষক বিশ্বনাথ ক্যালেন্ডার প্রযুক্তি সম্বন্ধে শিক থেকে অনেক মূল গ্রন্থে যোগে। এর মধ্য অবসানের ক্ষুদ্র বৈশিষ্ট্য মূহে যোগে যোগে এক শব্দীর কবিতার গান। বুদ্ধি মনুজেন্দ্র বসন্ত, ঢাকা মেট্রো কলেজের প্রোগ্রামার নির্মাণ করা অন্তর্যাকর্ষক বিশ্বনাথ ক্যালেন্ডার প্রযুক্তি সম্বন্ধে শিক থেকে অনেক মূল গ্রন্থে যোগে। এর মধ্য অবসানের ক্ষুদ্র বৈশিষ্ট্য মূহে যোগে যোগে এক শব্দীর কবিতার গান।

dailyobserver

Construction of stations along MRT-6 line making progress

As the construction of Metro Line 8 (MRT-8) from Uman to Matheal is making progress, the project authorities have also started building stations along the metro lines to end the project work together to open for passengers.

The 20.1 km MRT-6 line will have 10 stations and the government owned Dhaka Mass Transit Company Limited (DMTCL), which is building the metro rail in the capital has already distributed work order for 12 stations.

The tender for the remaining 4 are under process, Project Director of the Dhaka Mass Rapid Transit (DMRT) Md Abul Hossain told the Daily Observer on Saturday. He said construction of five stations is almost closer to an end.

He said Dhaka Mass Transit Company Limited (DMTC) has appointed McDonald Steel Building Products Limited (MSBPL) - a local construction firm to build the stations as sub-contractors.

Meanwhile, different local and international firms have started lobbying to get the work orders of the remaining stations. But locals are highly hopeful to get the orders on the priority basis.

and Abid Hossain said, of the 12 work orders Italian-Thai Development Corporation Limited (ITD) got construction order for 9 stations while 3 went to Tekkon AML Aberkko JV now building city metro lines.⁸

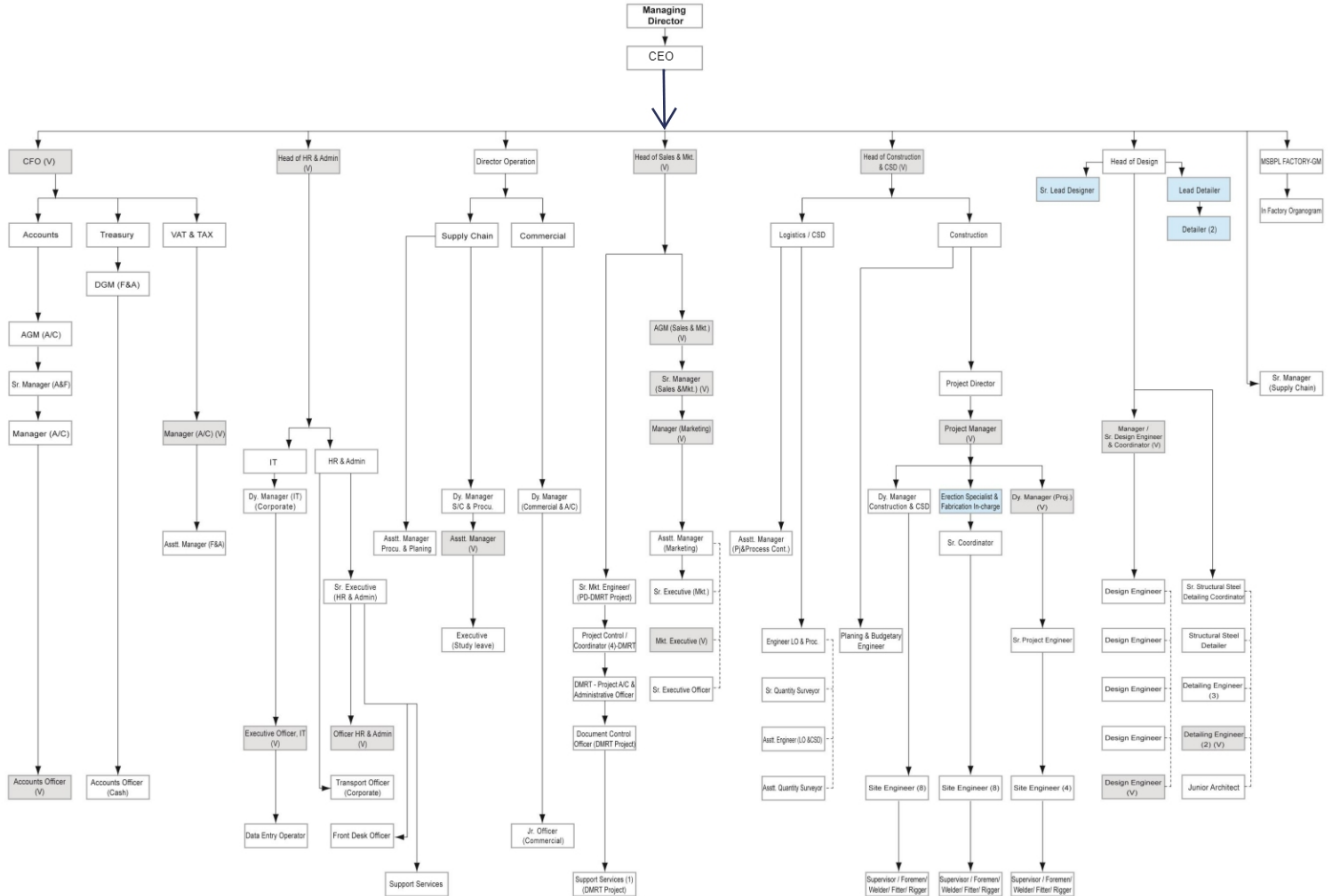
He said that McDoland has got work order of the 12 stations by way of sub-contracting from the two builders. Construction of four stations is at the last stage, Abid Hossain said.

Abid Hossain said, construction of metro stations on MRT-6 is being carried out fully with local steel. McDonald has successfully completed over 600 projects in Bangladesh. The company has many big projects in hands.

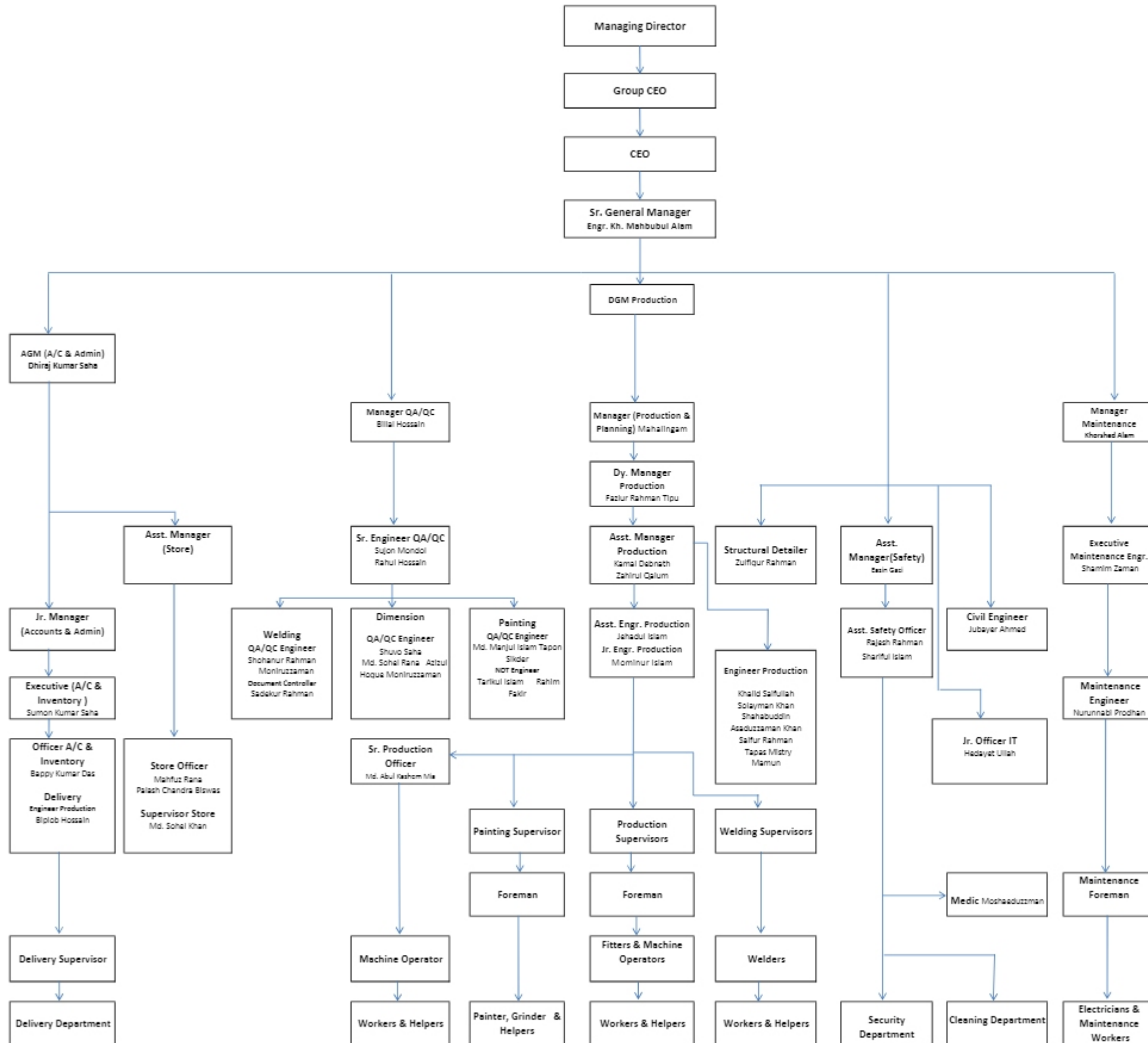
He said, "McDonalds import and use best quality steel products from Japan, Luxemburg, China and India. Ensuring quality is our first priority. McDonald steel is providing guarantee to ensure best quality materials and fittings for the infrastructures."


Syed Feroz Ahmed, Chief Executive Officer (CEO) said MSBPL is the pioneer of prefabricated steel infrastructures in the country, starting the journey in 1999. These types of buildings can resist natural disasters like earthquakes.

ORGANOGRAM OF McDONALD STEEL BUILDING PRODUCTS LTD.



**McDONALD STEEL BUILDING PRODUCTS LTD.
FACTORY ORANOGRAM**

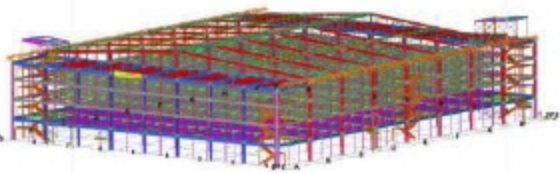




MSBPL Policies:

- i. Steel Fabrication Policy
- ii. Construction Policy
- iii. Engineering and Design Policy
- iv. Quality Control Policy
- v. Safety Policy

Steel Fabrication Policy



- Effective planning & execution to meet a delivery schedule and erection sequence.
- Engaging multi - skilled workforce, semi-automatic / automatic processes, innovative machines and techniques in workshops.
- Testing, training of welders and workforce at regular intervals to meet global industry standards and client requirements.
- Achieving cost effective productivity by reducing material wastage, creating safe working environment, automation.
- Stage-wise quality checks throughout the fabrication process to ensure the quality of the product and client satisfaction.
- Becoming a self-sufficient manufacturer in structural steel from beginning to end.

Construction Policy



- Ensuring proper Health & Safety Plan (HSP) and providing PPE (Personal Protective Equipment) to workers.
- Creating an erection plan at site.
- Planning to place suitable equipment on suitable places at site.
- Proposing ground assemble and lifting of assembled members at site.
- Achieving timely handover to a client.

Engineering and Design Policy



- Safe and optimized design
- Assuring that MSBPL has global knowledge resources, high skills of factory staff, professional staff in erection team and facilities.
- Health and safety policies
- Assure on producing the highest quality products in all aspects

Quality Control Policy

Exceeding customer's expectations by:

- Achieving delivery targets on time.
- Continuous quality improvement through data analysis & training.
- Procedural Implementation as per Quality Standards.
- Stringent Quality Checks throughout the process.
- Standardization of procedures as per code practices.

Safety Policy

- Commitment to promote safety, health & well being of all employees.
- Maintaining the highest standard of occupational safety and health performance within the steel industry.
- Commitment to protect the environment by minimizing the pollution, reduced use of natural resources and achieving the best possible environmental performance through out the activities.



McDonald Steel Building Products Ltd.	
OUR SAFETY STATISTICS RECORD	
DATE :	22-08-2023
No of Employees :	372
Start Date :	01-01-2019
No of Accident Free Days : (LT-Free Days)	231
No of Accidents This Month :	00
No of Accidents This Year :	03 (MINOR)
No of Injuries This Month :	00
No of Injuries This Year :	03 (FIRST AID)

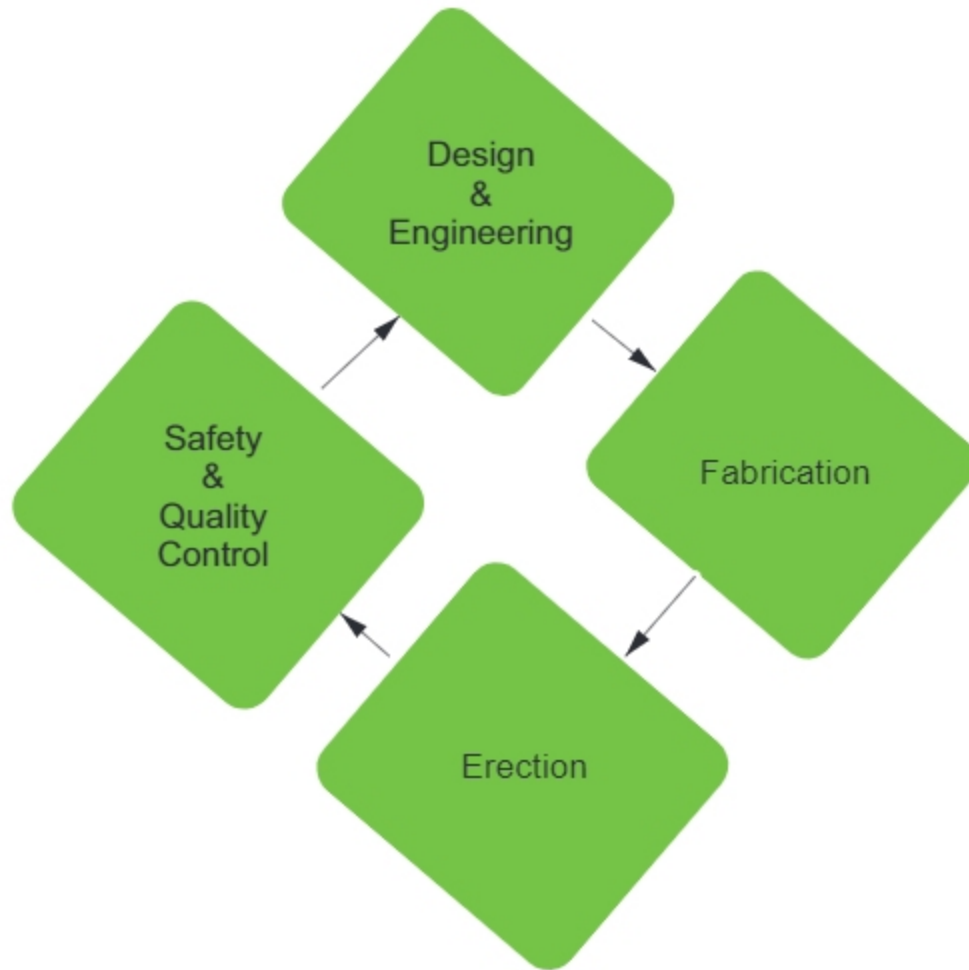


The reconstruction work on Boral Bridge as carried out by MSBPL under the guidance of Bangladesh Railway has not only modernized intra-country rail travel but vastly reduced the risk of incidents from previously unsafe structures.

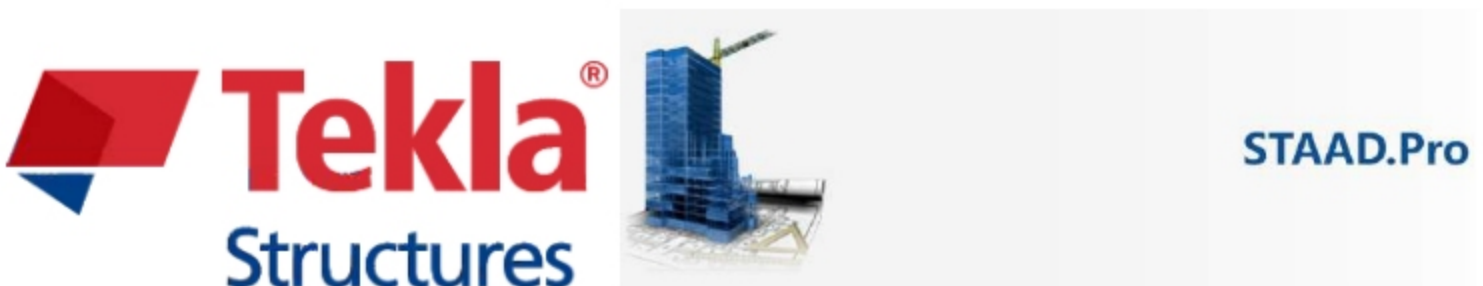
MSBPL Guiding Principles



Management Cycle Matrix



Licensed Engineering and Design Softwares



MSBPL Steel Fabrication Factories



MSBPL Steel Fabrication Factories

LOCATION	Bahadurpur, P.O. Bhawal Mirzapur, Joydevpur, Gazipur
Number of staff	400
Production Capacity	15,000 – 18,000 MT per annum
Certification	ISO9001: 2015
Year of Establishment	1998





LOCATION	Mirsarai Economic Zone, Chattogram
Number of staff	600 (expected)
Production capacity	18,000 – 25,000 MT per annum
Year of Establishment	2021



Steel Fabrication Equipments

SL No	Description	Number of Machine	Country of Origin
1	Akyapak Profile Bending Machine	1	Turkey
2	HGG Pipe Cutting Machine	1	Netherlands
3	Beam Rotator Machine	1	USA (Paddinghaus)
4	CNC Drill Machine	1	USA
5	Scallop Machine	2	Japan
6	TCM Forklift (10 Ton)	1	Japan
7	Shearing Machine (16 mm)	1	China
8	Shearing Machine (13 mm)	1	Belgium
9	Shearing Machine (06 mm)	1	Belgium
10	PHI auto welding Machine	1	USA
11	Beam Assembly Machine	1	China
12	Beam Straightening	1	China
13	Flame cutting Machine	2	China
14	Plate leveling Machine	1	Bangladesh
15	CorimPex Auto Welding Machine	1	Italy
16	Air Compressor Machine (screw type)	3	Germany
17	Bending Machine	1	Belgium
18	Bending Machine	1	China
19	Bondek Machine	1	China
20	Bondek Machine	1	Malaysia
21	Z- Purlin Machine	1	China
22	Trim-Dek Machine	2	Australia
23	V-Crimp Machine	1	Australia
24	Folder Machine	1	Australia
25	C-Purlin Machine	1	Australia
26	Crimp Curve Machine	3	USA & China
27	Punch Machine (Paddinghaus)	1	Germany
28	CNC Drill Machine	1	China
29	Plasma Machine	2	China
30	Punch Machine (Kingsland)	2	England

Steel Fabrication Equipments

SL No	Description	Number of Machine	Country of Origin
31	Hydraulic Press machine	1	China
32	Manual Drill Machine	5	Japan & England
33	Magnetic Drill Machine	11	Japan
34	U-roll Machine (8 mm)	1	Australia
35	Drill & Saw Machine	1	USA
36	Bend Saw Machine	1	Japan
37	Scallop Machine	2	Japan
38	Sub-Marge arc welding Machine	3	China
39	Air Gouging Machine	3	USA & China
40	Shot- Blasting Machine	1	China
41	Sand- Blasting Machine	1	Australia
42	Airless Painting Machine (Graco)	4	USA
43	Mig Welding Machine	30	China
44	Arc Welding Machine (Karida)	28	China
45	Rolling Machine for pipe	1	Belgium
46	Lathe Machine	2	Japan
47	Shaper Machine	1	Japan
48	Scissor Machine for Sag Rod	1	Bangladesh
49	Gentry Crane (25 Ton)	1	China
50	Over Head Crane (10 Ton)	7	China
51	Over Head Crane (5 Ton)	8	China
52	Over Head Crane (2 Ton)	1	China
53	Generator 500 KVA	2	UK
54	Generator 275 KVA (Volvo)	1	Sweden
55	Generator 62.5 KVA (Leyland)	1	England
56	TCM Forklift (5 Ton)	2	Japan
57	Truck Crane (5 Ton)	1	India
58	Liquid Oxygen Plant (10000 Ltr) Linde Bangladesh	1	India
59	C-Z Purlin Machine	1	China



Profile bending machine

(AKYAPAK APK-1000)

- Maximum section modulus : 7,000 - 11,000 cm³
- Power / Motor KW : 160 kW
- Rolls Pi : 840 mm
- Shaft Pi : 540 mm
- Bending Speed : 7 m/min
- Weight : 85.25 MT



3D pipe cutting machine

(HGG Pro Cutter 600-900 CNC PIPE CUTTER)

- Outer dimension: 48mm-910mm(2" - 36")
- Maximum pipe weight : Max. 3,000 kg



Welded beam fabrication machine

(PHI WELDING MACHINE 996012)

- Web thickness : 1/8" to 1/2"
- Web width : 5" min. to 72" max.
- Web taper : 15° max.
- Flange thickness : 3/16" min. to 1-1/2" max.
- Flange width : 4" min. to 20" max.
- Beam length : min. 8 ft. min.
- Beam section : max. 325 lbs./ft
- Beam weight : max 12,000 lbs
- Weld fillet size : 1/8" min. to 5/16" max.
- Welding speed : 20" to 120" per minute
- Typical welding speed:
 - 1) 1/8" fillet on 10 ga. material 80" to 100"/min.
 - 2) 3/16" fillet on 1/4" material 60" to 70"/min.
 - 3) 5/16" fillet on 3/8" material 25" to 30"/min.





Welded beam fabrication machine

(CORIMPEX MEDIUM DUTY SERIES, BWM-TC-MD 3000x1250)
Fitting-up, auto welding and straightening machine (3 in 1)

- Web height : 200 - 3,000 mm
- Flange width : 150 - 1,250 mm
- Flange thickness : 8 - 60 mm
- Post-deformable thickness : up to 40 mm
- Max. beam weight : 1,500 kg/m
- Beam travel speed : 12m / min
- Welding speed : 1 m /min
- Beam Types : H, I, T, L, Star, Beams, Box
- Longitudinal typology : Straight / Conical / Cambered
- Welding method : Single submerged arc / Twin Arc / Tandem



9 spindle Drill Line

(Peddinghaus-BDL 1250/9B).

- Maximum Profile Width :1250 mm
- Minimum Profile Width :75 mm
- Maximum Profile Height :610 mm
- Maximum Work Piece Weight :19,867 Kg
- Number of Drill Spindles :9
- Drill Spindles per Axis :3
- Drill Diameter :8-51 mm



CNC Beam Drill Line

(Ocean Avenger 40 (MDL 1000/1C).

- Maximum Profile Size: 18.3mx1000mm up to (1088kg/m)
- Maximum Profile Size :8mm
- Maximum Drill Diameter :40mm
- Maximum Thickness :Limited only by drill length 250mm
- Maximum Speed X-Axis :30.5m per min.
- Maximum Speed Y-Axis :36m per min.
- Average Output :200 to 400 holes / hour depending on the profile drilled



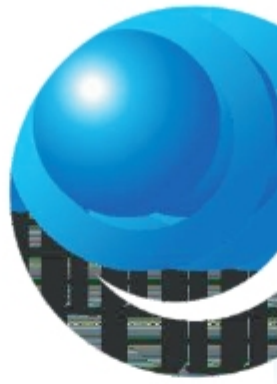
Strategic Partners To Support McDonald



Ensuring **Support** on Engineering
Welder **Training** Program

Fabrication & Erection **Supervision**
Sourcing of Quality Materials
Advisory Support

Global Clients



LARSEN & TOUBRO LIMITED



GERICO FRANCE



CHIYODA CORPORATION

Project Profile

Types of Projects

Metro Rail

Bridges

Hangar Projects

Factory Buildings

Power Plants

Over Head Bridges

Platform Sheds

High-rise Buildings

Resort & Restaurants

Conveyor Belt

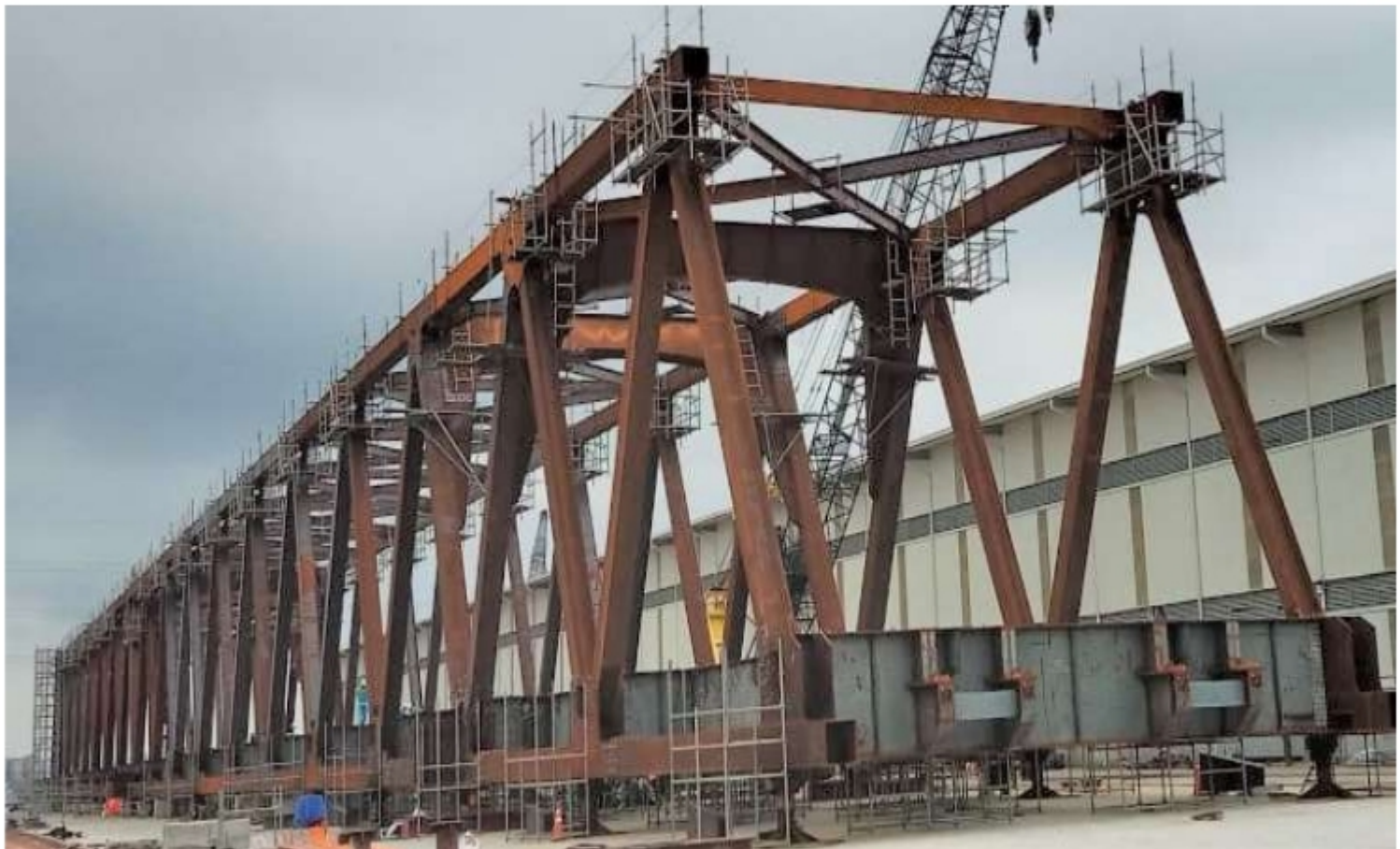
Toll Plaza

Hi-Tech Park

Multistoried Composit Buildings



Project Title: Roof Structure of
DMRTDP - Line 6 (CP 03, 04, 05 & 06)
Client: Dhaka Mass Transit Company
Ltd.
Location: Dhaka
Total Steel Tonnage: 15,000 MT
Project Status: Ongoing



**Project Title: Bangabandhu Sheikh
Mujib Railway Bridge**

**Client: OTJ JV
Location: Tangail/Sirajganj
Date of Completion: Ongoing**

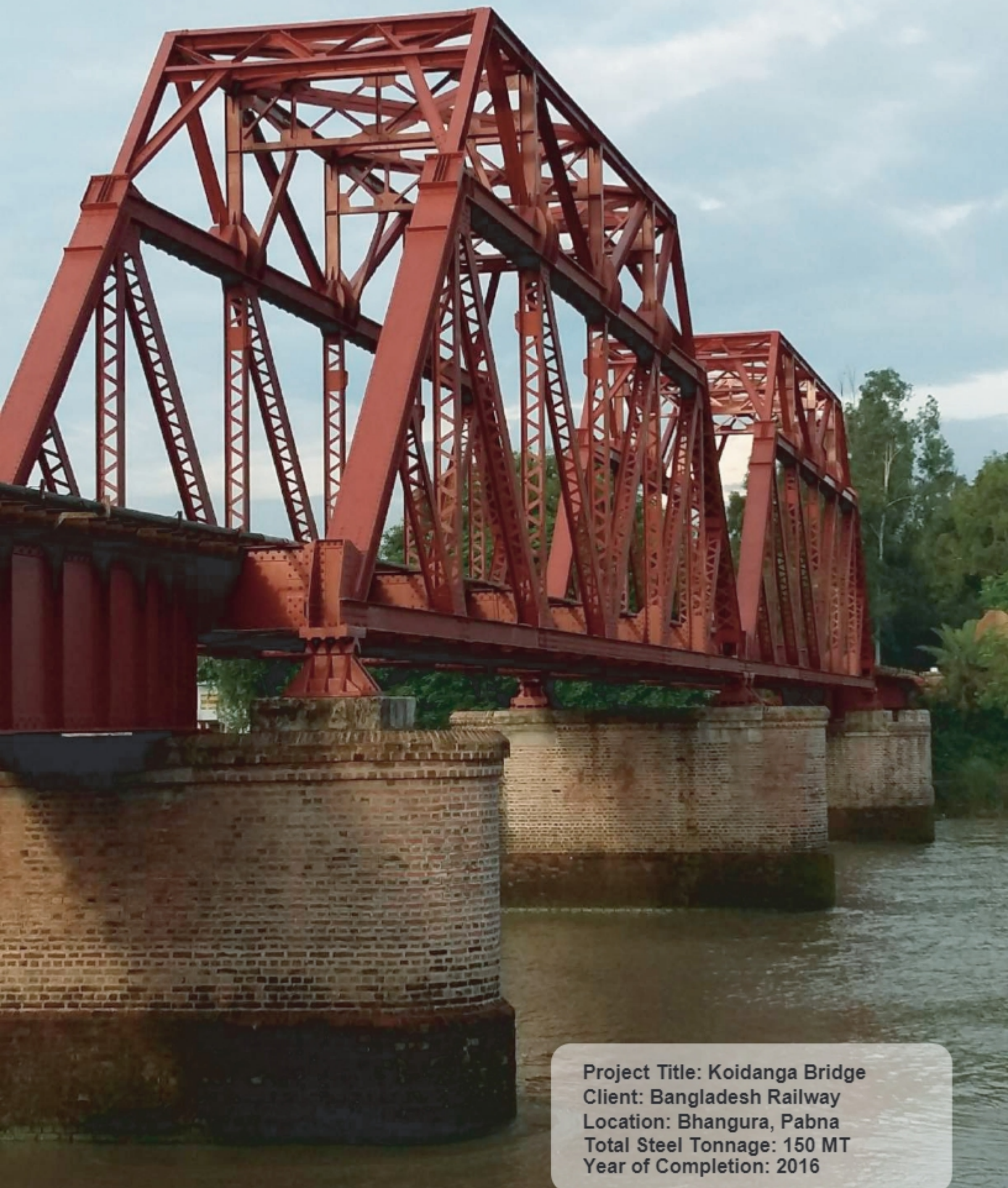


Project Title: 30M Bridge
Client: Bangladesh Railway
Location: Parbotipur, Dinajpur
Total Steel Tonnage: 1,000 MT
Date of Completion: 2016

MSBPL has the experience of manufacturing and erecting various types of steel bridges like deck type plate girders, through truss, semi through truss etc. We have completed 78 steel bridges for Bangladesh Railway throughout the country.



Project Title: Tongi-Bhairab Bridge
Client: Bangladesh Railway
Location: Tongi, Dhaka
Total Steel Tonnage: 310 MT
Date of Completion: 2014



Project Title: Koidanga Bridge
Client: Bangladesh Railway
Location: Bhangura, Pabna
Total Steel Tonnage: 150 MT
Year of Completion: 2016



Project Title: 16 Storied MTB & 12 Storied Dormitory
Building of Sheikh Hasina Software and Technology Park
Client: Ministry of IT, Government of Bangladesh
Location: Nazir Shnkarpur Road, Jashore
Total Steel Tonnage: 4,150 MT
Gross Floor Area (sqm): 28,500
Date of Completion: 2016
Worked as SEL-MSBPL JV



Project Title: Admin Building of Bangabandhu Sheikh
Mujib Hi-Tech Park
Client: Ministry of IT,
Government of Bangladesh
Location: Companiganj, Sylhet
Total Steel Tonnage: 360 MT
Gross Floor Area (sqm): 3,400
Date of Completion: Ongoing
Worked as EPC Contractor





HSIA 3rd Terminal

Client: DSHI BD & Samsung C&T

Location: Hazrat Shahjalal International Airport, Dhaka

Project Status: Ongoing



Project Title: 14-Storeyed Hospital Building
Client: Ibn Sina Medical College, Hospital
Location: Kallyanpur, Dhaka
Total Steel Tonnage: 750 MT
Gross Floor Area (sqm): 13,000
Date of Completion: 2015



Project Title: AIUB Library Building
Client: American International
University Bangladesh (AIUB)
Location: Bashundhara, Dhaka
Total Steel Tonnage: 420 MT
Gross Floor Area (sqm): 3,500
Date of Completion: 2017



Project Title: Navy Air Hangar
Client: Bangladesh Navy
Location: Potenga, Chattagram
Total Steel Tonnage: 560 MT
Gross Floor Area (sqm): 2,537
Date of Completion: 2014

McDonald Steel is one of the pioneer in **Bangladesh** to build long span structures such as air hangars used by the **Bangladesh Navy, Army Aviation Group** including a 132ft span hangar.



Project Title: R & R Aviation Hangars
Client: R & R Aviation
Location: Airport, Dhaka
Total Steel Tonnage: 83 MT
Gross Floor Area (sqm): 1,338
Date of Completion: 2014



Project Title: Casa Hangar
 Client: Bangladesh Army
 Location: Dhaka Cantonment
 Total Steel Tonnage: 635 MT
 Gross Floor Area (sqm): 4,520
 Date of Completion: 2018



Factory Building

Project Title: Refrigerator Factory Building of Samsung Fair Electronics
Clients: Samsung Fair Electronics
Location: Shibpur, Narsingdi
Total Steel Tonnage: 1400 MT
Gross Floor Area (sqm): 27,000
Year of Completion: 2018



Project Title: Newtex Fashion Limited
Clients: Newtex Apparel Ltd.
Location: Mirzapur, Tangail
Total Steel Tonnage: 650 MT
Gross Floor Area (sqm): 13,000
Year of Completion: 2007



Factory Building

McDonald Steel has completed over 800 industrial buildings and structures, including complicated projects such as Gerico roofing, star-column structures in YKK factory and in 2019 did its inaugural overseas project in Biratnagar, Nepal.



Project Title: Lafarge Surma Cement
Client: Lafarge Surma Cement Ltd.
Location: Chhatak, Sylhet
Year of Completion: 2005



Project Title: Asian Paints

- Client: Asian Paints Bangladesh Ltd.
- Location: BSMSN, Mirshorai, CTG
- Date of Completion: 2022



Project Title: 4 Storied Garments Building
Client: French Fashions Limited
Location: Adamjee EPZ, Narayanganj
Total Steel Tonnage: 800 MT
Gross Floor Area (sqm): 15,000
Year of Completion: 2011



Project Title: 4 storied Factory building
Client: YKK, Bangladesh
Location: Dhaka EPZ, SAVAR
Total Steel Tonnage: 3,300 MT
Gross Floor Area (sqm): 32,800
Year of Completion: 2018



Factory Building

Project Title: 6-Storeyed Multipurpose Building
Client: Ecotex Group
Location: Chandra, Gazipur
Total Steel Tonnage: 3,400 MT
Gross Floor Area (sqm): 39,019
Year of Completion: 2017



Project Title: Dhaka Feed Mill
Client: CP, Bangladesh
Location: Kaliakoir, Gazipur
Total Steel Tonnage: 2,200 MT
Year of Completion: 2013



Project Title: Sugar Mill Roof Structure
Client: City Group
Location: City Economic Zone, Narayanganj
Total Steel Tonnage: 400 MT
Gross Floor Area (sqm): 4,180
Date of Completion: 2006



Project Title: 4-Storeyed Factory Building
Client: YKK, Bangladesh
Location: Dhaka EPZ, SAVAR
Total Steel Tonnage: 1,700 MT
Gross Floor Area (sqm): 16,250
Date of Completion: 2016



Project Title: 460 MW Power Plant
Client: TR-TSK, Spain
Location: Ashuganj, B. Baria
Total Steel Tonnage: 3,000 MT
Date of Completion: 2016





Power Plant



Project Title: 100 MW Power Pac
 Client: Sikder Group
 Location: Mutiara, Keraniganj
 Total Steel Tonnage: 350 MT
 Gross Floor Area (sqm): 3,900
 Year of Completion: 2010



Project Title: 100 MW United Power Plant
Client: United Group
Location: Dhaka EPZ, Savar
Total Steel Tonnage: 200 MT
Gross Floor Area (sqm): 2,000
Date of Completion: 2009

Power Plant



Project Title: 360MW Power Plant
Client: Larson & Tubro. Ltd.
Location: Bheramara, Kustia
Total Steel Tonnage: 1,000 MT
Date of Completion: 2017



Project Title: 100MW Power Plant
Client: Acorn Infrastructure Services Ltd.
Location: Dangarchor, Chattagram
Total Steel Tonnage: 450 MT
Gross Floor Area (sqm): 3,900
Date of Completion: 2010

**Over Head Bridge
& Platform Shed**



Project Title: Sarshadi Over Head Bridge
Client: Bangladesh Railway
Location: Sarshadi, Feni
Total Steel Tonnage: 70 MT
Date of Completion: 2015



Project Title: Gunobathi Over Head Bridge
and Platform Sheds
Client: Bangladesh Railway
Location: Gunobathi, Feni
Total Steel Tonnage: 100 MT
Date of Completion: 2015

Restaurant



Project Title: KFC Restaurant
Client: KFC Bangladesh
Location: Gulshan, Dhaka
Total Steel Tonnage: 90 MT
Gross Floor Area (sqm): 1,800
Date of Completion: 2005

Resort



Project Title: Jamuna Resort
Client: Jamuna Bridge Authority
Location: Jamuna Bridge Approach Road, Bhupur
Date of Completion: 1992



Project Title: 17KM Conveyor Belt
Client: Lafarge Surma Cement Limited
Location: Chatak, Sylhet
Date of Completion: 2008



Project Title: Padma Toll Plaza
Client: Bangladesh Bridge Authority
Location: Mawa & Jajira
Total Steel Tonnage: 450 MT
Gross Floor Area (sqm): 3,100
Date of Completion: 2017

McDONALD STEEL BUILDING PRODUCTS LIMITED

Shanta Western Tower (Level-11), 186 Bir Uttam Mir Sawkat Ali Sarak, Tejgaon I/A, Dhaka-1208, Bangladesh

Tel : 8878748-51, Fax: 880-2-8878752, E-mail: modnld@modonaldbd.com

Recent Top Clients								
Sl.	Name Of Client	Project Name	Construction Year	Completion Year	Work order Value In BDT	Area Covered / Build up area (in sft)	Quantity in MT	Location
1	Italian-Thai Development	Construction of viducts from Motijheel to Komlapur and construction of komlapur elevated station	2023	On going	5,020,000,000			Dhaka
2	Farvent Multiboard Limited	Main Production Building	2023	On going	240,000,000	290,000	1056	Jamalpur EZ
3	DSHI BD	Hazrat Shahjalal Int'l Airport Expansion Project	2021	2022	372,356,870	185,000	5168	Dhaka
4	Reilance Jera	Power Plant	2021	2021	88,656,337	21,000	646	Meghnaghat, Narayangonj
5	Embassy of Japan	Connecting Corridor	2021	2021	5,000,000	1,200	19	Baridhara, Dhaka
6	Asian Paints (Bangladesh) Ltd.	Manufacturing, Ware House etc.	2020	2021	274,646,603	153,000	2025	Mirshorai, Chattogram
7	Dhaka Mass Transit Company Limited (DMTCL), CP 06	4 no's station	2020	2022	653,811,677	187,000	3157	Dhaka
8	Shanta Group	Shata Forum Connecting Bridge	2020	2021	88,771,973	18,000	297	Tejgaon, Dhaka
9	Bangladesh Navy	Closed Door Air Hangar	2019	2021	202,191,962	22,800	533	Chattogram
10	Dhaka Mass Transit Company Limited (DMTCL), CP 05	3 no's station	2019	2022	1,051,794,792	140,250	2879	Dhaka
11	Ziska Pharmaceuticals Ltd.	Ware House building	2019	2020	157,950,000	79,824	1170	Shafipur, Gazipur
12	Dhaka Boat Club Limited	3 storied club Building	2019	2020	45,862,425	61,085	387	Asulia, Dhaka
13	North South University	North & South Academic Building	2018	2019	65,811,843	48,500	225	Dhaka
14	Dhaka Mass Transit Company Limited (DMTCL), CP 03 & 04	9 no's station	2017	2021	940,963,025	420,750	7236	Dhaka
15	Bangladesh Hi-tech Park Authority	Bangabandhu Sheikh Mujib Hi Tech Park	2017	2020	159,181,566	31,450	364	Companygonj, Sylhet
16	Bangladesh Army	Construction of Hangar	2016	2018	238,776,941	49,407	584	Army Aviation, Dhaka-Cantt
17	Bangladesh Army	Construction of Tank repairing shed (Phase 1, 2 & 3)	2015	2018	Phase 1 : 4,75,20,630 Phase 2 : 4,67,16,500 Phase 3 : 3,47,64,985	54,121	1209	Rajendrapur-Cantt
18	Shimizu Corporation (YKK Bangladesh)	Garments Buildings	2015, 2016, 2017	2016-2019	626,000,000	329,465	4500	Savar, Dhaka
19	Bangladesh Hi tech Park Authority	Commercial Building (Phase 1)	2015	2017	426,137,495	172,299	364	Jessore
20	Bangladesh Hi tech Park Authority	Commercial Building (Phase 2)	2015	2017	779,891,265	80,999		Jessore

McDONALD STEEL BUILDING PRODUCTS LIMITED

Shanta Western Tower (Level-11), 186 Bir Uttam Mir Sawkat Ali Sarak, Tejgaon I/A, Dhaka-1208, Bangladesh

Tel : 8878748-51, Fax: 880-2-8878752, E-mail: mcdnld@mcdonaldbd.com

Worked as JV partner/EPC contractor

SL. NO	NAME OF CLIENT & PROJECT	Year	LOCATION
1	Jessore IT Park (MTB Building) 14-storied	2014	Jessore
2	Jessore IT Park (Dormitory Building) 12-storied	2014	Jessore
3	Ibn Sina Medical College & Hospital (14 storied Steel Building)	2014	Kalyanpur, Dhaka
4	Hi-tech Park Sylhet (Electronics City) 3-storied Admin Building	2017	Companiganj, Sylhet
5	Kurmitola Golf Club, Bangladesh Army	2003	Dhaka Cantonment
6	Bangladesh Ordnance Factories	2006	Gazipur, Cantonment.
7	GE (Army) BOF Gazipur Cantonment	2007	Gazipur
8	Cartidge Shop, GE Army BOF Gazipur Cantonment	2009	Gazipur Cantonment
9	Belman Hanger, Bangladesh Military Academy	2009	Bhatiary, Ctg. Cantonment
10	Bangladesh Army Golf Club	2014	Dhaka Cantonment, Dhaka
11	Bangladesh Navy (Air Hanger)	2014	Chittagong
12	Bangladesh Navy, Khulna Shipyard Ltd. (New Store Shed)	2015	Khulna
13	Bangladesh Army (Tank Repair Shed)	2015	Rajendrapur Cantt., Gazipur
14	Bangladesh Navy (Issa Kha Belman Air Hanger)	2016	Chittagong
15	Bangladesh Army (Air Hanger CASA) Steel & Civil work	2016	Dhaka Cantt.
16	Bangladesh Navy (Air Hangar)	2019	Chattogram

McDONALD STEEL BUILDING PRODUCTS LIMITED

Shanta Western Tower (Level-11), 186 Bir Uttam Mir Sawkat Ali Sarak, Tejgaon I/A, Dhaka-1208, Bangladesh

Tel : 8878748-51, Fax: 880-2-8878752, E-mail: mcdnld@mcdonaldbd.com

A SHORT LIST OF MSBPL VALUED CLIENTS YEAR WISE

SL. NO	NAME OF CLIENT & PROJECT	Year	LOCATION
1	Pride Group (Dyeing Factory)	2000	Savar, Dhaka
2	RFL Plastic Ltd. (PRAN Group)	2000	Ghorashal
3	APS Apparels Ltd.	2001	Pubail, Gazipur
4	BRAC (Aarong Centre)	2001	Tejgaon, Dhaka
5	Automan Limited	2001	Kawranbazar, Dhaka
6	Ayesha Abed Foundation, BRAC	2001	Kurigram
7	Hosaf Fan & Meter Industries	2001	Shafipur, Gazipur
8	ICA Bhaban	2001	K. Bazar, Dhaka
9	Ideal Engineers	2001	Gazipur Cantonment
10	Arkay Fabrics Ltd.	2002	Savar, Dhaka.
11	Aboni Textile Ltd.	2002	Savar, Dhaka
12	ACI Formulation Ltd.	2002	Raza Bazar, Rajendrapur, Gazipur.
13	Al-Haj Engineering	2002	Mymensingh
14	Beximco Textiles Ltd. (Beximco Denim)	2002	Savar, Dhaka
15	Ananda Group	2002	Tongi, Gazipur
16	Apparel Village Limited	2002	Savar, Dhaka
17	Kariko Builders Ltd.	2002	Tongi, Gazipur
18	Asia Foils Limited	2002	Vowal Mirzapur, Gazipur
19	Asian Textile Mills Ltd.	2002	Munshigonj
20	Greenland Garments Ltd.	2002	Konabari, Gazipur.
21	Atco International	2002	Chittagong
22	Engr. Brigade Mosque & Training shed	2002	Dhaka Cantt.,
23	Haque Engineering Works	2002	Zigatola, Dhaka.
24	Legacy Furniture (Pvt.) Ltd.	2002	Savar, Dhaka.
25	Lotus Kamal Spinning Mills Ltd.	2002	Lalmai, Comilla
26	M/S. Sheikyl Textiles Ltd.	2002	Gazipur.
27	Taher Group (Petrol Pump)	2002	Chittagong.
28	Tania Textiles	2002	Dhaka
29	Tropical Knitex Ltd.	2002	Chandura, Gazipur
30	Tropical Knittex Ltd.	2002	Shafipur, Gazipur.
31	Trust Builders Ltd.	2002	Barisal Bus Terminal
32	Uttara Automobiles Ltd.	2002	Sholo Shahar, Chittagong.
33	Magura Bus Terminal	2003	Magura
34	M. A. Quader & Co. (Hakkani Group)	2003	North Pahartali, Chittagong
35	Liberty Garments Industries Ltd.(3 Storied)	2003	Zirani Bazar, Savar, Dhaka.
36	Ananta Apparels Ltd.	2003	Elephant Road, Dhaka
37	Anlima Textile Ltd.	2003	Karnapara, Savar, Dhaka.
38	Abdullah Spinning Mills	2003	Kanchpur, Narayangonj
39	ACI Godrej Agrovet Pvt. Ltd.	2003	Sirajgong
40	Al-Amin Bread & Biscuits Ltd.	2003	Maijdee, Noakhali.
41	Azim Mannan Garments	2003	Farmgate, Dhaka
42	Babylon Dresses Ltd.	2003	Mirpur, Dhaka.
43	BDR Darbar Hall	2003	Peel Khana, Dhaka.

A SHORT LIST OF MSBPL VALUED CLIENTS YEAR WISE

SL. NO	NAME OF CLIENT & PROJECT	Year	LOCATION
44	Bengal Group (Biscuit Factory)	2003	Ashulia, Savar
45	Beximco Textiles Ltd. (Cutting Section)	2003	Savar, Dhaka
46	BOC Bangladesh Ltd.	2003	Tejgaon, Dhaka.
47	BRAC Bungalow	2003	TARC, Rajshahi
48	Beximco Media	2003	Kawran Bazar, Dhaka
49	DAF Accessories Ltd.	2003	Kaliakhiar, Gazipur
50	Dhaka Ice Cream Industries Ltd. (POLAR)	2003	Tejgaon, Dhaka.
51	Divine Textile Ltd.	2003	Shafipur, Gazipur.
52	Echo Cotton Mills Ltd.	2003	Mowna, Gazipur
53	Epsilon Engineers Ltd.	2003	Rupgonj, Narayanganj
54	FKN Printing Mills Ltd.	2003	Savar, Dhaka.
55	FISCO Bangladesh Ltd.	2003	Katghar, North Patenga, Chittagong
56	Good Storage of Pran Dairy, Pran Group	2003	Ghorashal, Norshingdi
57	Hajrat Shahjalal Newsprint Ind. Ltd.	2003	Kanchpur, Dhaka
58	Ha-Meem Group (Two Storied Factory)	2003	Gazipur
59	Ifad Multi Products Ltd.	2003	Savar, Dhaka
60	Shamsuddin Cotton Mills Ltd.	2003	Feni
61	Shamsul Alamin Group	2003	Board Bazar, Gazipur
62	Shepherd Industries Ltd.	2003	Kathalia, Bhaluka, Mymensingh.
63	Shinepukur Ceramics Ltd.	2003	Beximco Industrial Park, Savar.
64	Iqbal Enterprises (Deport) Ltd.	2003	Kalurghat, Chittagong
65	Masood & Co. Ltd.	2003	Kurmitola, Dhaka.
66	Islami Bank Foundation Hospital	2003	Dhaka
67	Jamuna Resort Ltd.	2003	Tangail
68	Jams Apparels (Pvt) Ltd.	2003	Narayanganj
69	JMI Bangla Co. Ltd	2003	Chadhaigram, Comilla.
70	K.B Interlining Ltd.	2003	New Dhaka EPZ, Savar, Dhaka.
71	Kallol Group	2003	Tejgaon, Dhaka
72	Octagon Fibers & Chemicals Ltd.	2003	Tongi, Gazipur
73	Khagrachori Gymnasium	2003	Khagrachori, Chittagong
74	Noor Ala Marketing Ltd.	2003	Savar, Dhaka
75	Kurmitola Golf Club	2003	Dhaka Cantonment
76	Monno Fabrics Ltd.	2003	Gilondo, Manikgonj.
77	Padma Bleaching & Dyeing Ltd.	2003	Rupganj, Bolta, Narayanganj
78	Peacecon Consultant	2003	Zirani, Savar
79	USHA Feed Ltd.	2003	Jessore.
80	USHA Feed Ltd. (Baron)	2003	Ashulia, Dhaka
81	Utah Knitting & Dyeing Ltd.	2003	Gazipur
82	Pearl Paper & Board Mills Ltd.	2003	Savar, Dhaka.
83	Pidilite Speciality Chemicals (BD) Ltd. of 3 Projects	2003	Munshigonj
84	Singer Bangladesh Ltd.	2003	Savar, Dhaka
85	Transcom Beverage Plant (Pepsi)	2003	Gazipur
86	Transcraft Limited	2003	Dhaka
87	Suri Chala Textile And Dyeing Mills Ltd.	2003	Shafipur, Gazipur.
88	Pran Dairy Ltd.	2004	Ghorashal

A SHORT LIST OF MSBPL VALUED CLIENTS YEAR WISE

SL. NO	NAME OF CLIENT & PROJECT	Year	LOCATION
89	Kushtia Computer Training Centre	2004	Kushtia
90	Jennys Shoe Ltd.	2004	Gazipur
91	Five Star Complex	2004	Tongi, Dhaka.
92	BRAC Construction Ltd. (Extension of Dormitory)	2004	Mymensingh
93	Bengal Poly & Paper Sack Ltd.	2004	
94	Harvest Rich Limited.	2004	Tongi, Gazipur
95	Berger Paint Bangladesh Ltd.	2004	Savar, Dhaka
96	Agricultural Marketing Co. Ltd. (Pran Group)	2004	Ghorashal
97	Akij Group (Leather Factory)	2004	Nayapara, Jessore
98	B.D. Foods Ltd.	2004	Konabari, Gazipur
99	Apex Footwear Ltd.	2004	Shafipur, Gazipur
100	Deep Textile Mills Ltd.	2004	Dhamrai, Savar, Dhaka.
101	Bangladesh Foundry & Engineering Works Ltd. (Emirates Cement Factory)	2004	Mukterpur, Munshiganj.
102	BRAC Printing & Packaging Factory	2004	Gazipur
103	Buraq Express (BD) Ltd.	2004	Tejgaon, Dhaka.
104	Con-Brick Construction Company	2004	Comilla EPZ
105	Envoy Group (Weaving)	2004	Joydebpur, Gazipur
106	Fu-Wang Group (Factory Building)	2004	Hotapara, Gazipur
107	H. P. Chemicals Ltd.	2004	Tingaon, Araihaaz, Narayanganj
108	H.N. Shoe (H.N. Cotton)	2004	Kaliakor, Gazipur
109	Home Bound Packer & Shipper Ltd.	2004	Gulshan-1, Dhaka
110	Jamalpur Jute Mills	2004	Jamalpur
111	Jessore Bus Terminal	2004	Jessore
112	Jamaluddin Mills Ltd.	2004	
113	Jamuna Bridge Project all facility buildings	2004	Tangail
114	Kollol Group of Industries (Shed 01 &02)	2004	Tejgaon, Dhaka
115	Laila Pet Bottol & Food Products Ltd.	2004	Bhatiary, Sitakunda, Chittagong
116	Lalon Academy Complex	2004	Kushtia
117	Landmark Foundation Co.	2004	Dhaka.
118	M.M Agha Ltd.	2004	Chittagong
119	M/S Mahabub Brothers	2004	Mongla EPZ
120	M/S Makhan Engineering Works	2004	Dhaka Cantonment, Dhaka
121	M/S S.S Enterprise	2004	Comilla Cantonment
122	Mir Cement Ltd.	2004	Roupganj, Narayanganj
123	Nassa Group (2-storied)	2004	Tejgaon, Dhaka
124	Navana Construction Ltd.	2004	Tejgaon, Dhaka.
125	Navana Furniture Ltd.	2004	Savar, Dhaka
126	Ocean Containers Ltd.	2004	Katghar, North Patenga, Ctg.
127	Raquef Apparels Ltd.	2004	Savar, Dhaka
128	REB Central Workshop-Cum- Warehouse Complex	2004	Savar, Dhaka
129	Oshin Knitwears Co. Ltd.	2004	Gazipur
130	Padma Spinning Mills	2004	Ashulia, Savar
131	Paksey Bridge all facilities Building Project	2004	Ishardi
132	Prokalpa Kaushali Ltd.	2004	Chittagong
133	Purbani Rotor Spinning Mills Ltd.	2004	Gazipur

A SHORT LIST OF MSBPL VALUED CLIENTS YEAR WISE

SL. NO	NAME OF CLIENT & PROJECT	Year	LOCATION
134	Quality Assured Ltd.(3 Storied)	2004	Shafipur, Gazipur
135	S.P. Corporation	2004	Lalbagh, Dhaka.
136	Samannaz Super Oil	2004	
137	Sanowara Dairy Foods Ltd.	2004	Chandgaon, Chittagong.
138	Rising Group of Spinning Mills	2004	Saturia, Manikgonj
139	Royal Engineers (Pvt.) Ltd.	2004	Chittagong
140	Siddirgonj Power Station	2004	Siddhirganj, Narayanganj
141	Silkway Cards and Printing Ltd. (3 Storied)	2004	Tejgaon, Dhaka
142	Zenith Packages Limited	2004	Barisal
143	Zia Smriti Museum	2004	Chittagong
144	United Group (Extension Part 01 & 03)	2004	Savar, Dhaka
145	United Weaving Ltd.	2004	Ashulia, Savar
146	Scancem Cement Bangladesh Ltd.	2004	Kanchpur, Narayanganj
147	Seven Circle (Bangladesh) Ltd. Edible oil Shed	2004	Char Mirpur, Kaligong, Gazipur.
148	SQ Holdings Ltd.	2004	Gazipur
149	Tamanna Sweater Factory Ltd.	2004	Mowna Chowrasta, Gazipur
150	Vehicle Shed of CMTD, Dhaka Cantonment	2004	Dhaka Cantonment
151	Square Pharmaceuticals Ltd (Herbal Plant) Two Storied	2005	Pabna
152	Purbani Synthetic Spinning Ltd.	2005	
153	Neptune Commercial	2005	Ashulia, Savar
154	M/S Sohag Enterprise	2005	Jamuna Resort Ltd.
155	M/S Zisan Corporation	2005	Comilla Cantonment
156	Cathweld Steel Building Products Ltd.	2005	Dhaka.
157	Cemex Cement Bangladesh Ltd.	2005	Modangonj, Narayanganj.
158	Apex Terry Towel Ltd.	2005	Gazipur
159	Esquire Knit Composite Ltd.	2005	Tatki, Rupgonj.
160	Bashundhara Engineering Ltd.	2005	Dhanmondi, Dhaka
161	KYCR Coil Industries Ltd.,	2005	Bara Kumira, Chittagong
162	British American Tobacco (Workshop)	2005	Mohakhali, Dhaka
163	Danish Foods Ltd.	2005	Dhaka
164	Glacier Sweater Composite Mills Ltd.	2005	Gazipur
165	Globe Soft Drinks Ltd.	2005	Kanchpur, Narayanganj
166	Globe Soft Drinks Ltd. (Getex Plastic Ltd.)	2005	Maijdi Road, Noakhali.
167	Gulshan Club Ltd.	2005	Gulshan, Dhaka.
168	Gymnasium-cum-Auditorium	2005	Jalalabad Cantt., Sylhet
169	KFC (Two Storied Building)	2005	Dhaka
170	KGPL Feed Mills Ltd.	2005	Gazaria, Munshigonj
171	Khansons Jutex Ltd.	2005	Barishal
172	Khansons Jutex Ltd. (Extension of Factory Building)	2005	Barisal
173	Khulna Medical College Auditorium	2005	Khulna
174	L & T Fabrication Work	2005	
175	Lafarge Surma Cement Plant	2005	Chattak, Sylhet
176	Meghna Group of Industries	2005	Meghna Ghat, Monshiganj.
177	Monomedi Pharmaceuticals Ltd.	2005	Tangail
178	N.A.Z Bangladesh Ltd.	2005	Vaoul, Mirzapur, Gazipur

A SHORT LIST OF MSBPL VALUED CLIENTS YEAR WISE

SL. NO	NAME OF CLIENT & PROJECT	Year	LOCATION
179	National Beverage Industries Ltd.	2005	Hemayetpur, Dhaka
180	Noman Group	2005	Pagar, Tongi, Gazipur
181	Noman Group	2005	Gazipur
182	Novo Healthcare & Pharma Ltd.	2005	
183	One Spinning Mills Ltd.	2005	Gazipur
184	Padma Poly Cotton	2005	Savar, Dhaka
185	Partex Beverage Ltd.	2005	Rajendrapur, Gazipur.
186	Soilmach (Pvt.) Ltd.	2005	Haripur, Narayanganj.
187	Partex Group (Danish Factory)	2005	Kanchpur, Narayanganj
188	PWD (Noakhali)	2005	Noakhali
189	Quazi Enterprises Ltd.	2005	Rajfulbaria, Savar, Dhaka.
190	Sattar Spinning Mills Ltd.	2005	Shafipur, Gazipur
191	Shabnam Textile Mills Ltd.	2005	Gazipur, Dhaka
192	Sunshine Fashion Knitting Ind. Ltd.	2005	Tejgaon
193	Shohagpur Textile Mills Ltd.	2006	Lakhankhola, Narayanganj
194	Rahim Steel Mills Co. (Pvt.) Ltd.	2006	Katchpur, Narayanganj
195	Padma Spintex Ltd. (Godown Building)	2006	Savar, Dhaka
196	Meghna Innova Rubber Factory	2006	Hatubanga
197	Badar Spinning Mills Ltd. (Raw Cotton Godown)	2006	Gazipur
198	AMC Knit Composite Ltd.	2006	Gazipur
199	Bangladesh Ordnance Factories.	2006	Gazipur, Cantonment.
200	Bangladesh Press Institute	2006	Dhaka
201	BASIC Engineering Ltd.	2006	Zia International Airport, Kurmitola.
202	Bay Footweare Ltd. (2 Storied Factory Building)	2006	Gazipur
203	Central Pharmaceuticals Ltd.	2006	Mirpur, Dhaka
204	China Bangla Ceramics Industries Ltd.	2006	Rupgonj, Narayanganj
205	Chittagong City Corporation (CNG Filling Station)	2006	Chittagong
206	City Group (Ware House)	2006	Narayanganj
207	Classic International (Pvt) Ltd.	2006	Joydebpur, Gazipur
208	Fakir Knitwears Ltd.	2006	Fatulla, Narayanganj.
209	Far East Knitting & Dyeing Ltd.	2006	Shafipur, Gazipur.
210	Faridpur Towels Ltd.	2006	Gazipur
211	Colormaster Ltd.	2006	Bhaluka, Mymensingh
212	Diamond Spinning Mills (Pvt) Ltd.	2006	Savar, Dhaka
213	Dulal Brothers Ltd.	2006	Gazipur
214	Electro Venture Ltd.	2006	Sreepur, Gazipur
215	Regent Textile Mills Ltd. (Dyeing Factory)	2006	Chittagong
216	Eskayef Bangladesh Ltd.	2006	Gazipur
217	Givensee Group	2006	Gazipur
218	Givensee Group (Garments Factory)	2006	Gazipur
219	Ha-Meem Group (Vertical Extension)	2006	Gazipur
220	Meghna Group	2006	Gargaria, Gazipur
221	Imperial Composite Fabrics Ltd.	2006	Tongi
222	J. K Group	2006	Gazipur
223	J. K Rotor Spinning Mills Ltd.	2006	Gazipur

A SHORT LIST OF MSBPL VALUED CLIENTS YEAR WISE

SL. NO	NAME OF CLIENT & PROJECT	Year	LOCATION
224	Jamuna Denims Limited	2006	Konabari, Gazipur.
225	Karooni Knit Composite Ltd. (2-storied Office Building).	2006	Gazipur
226	Keya Knit Composite Ltd.	2006	Gazipur
227	MTC Cement Ind. Ltd.	2006	Meghnaghat, Narayangonj
228	Nassa Spinning Ltd. (Extension)	2006	Comilla
229	Nexus Sweater Industries (Pvt.) Ltd.	2006	Joydebpur, Gazipur
230	Palmal Group (Vertical Extension)	2006	Savar, Dhaka
231	Paolo Footwear (BD) Ltd (2-storied Building)	2006	Chittagong
232	Paragon Enterprises Ltd.	2006	Mirpur
233	Purbani Yarn Dyeing Limited	2006	Mouchak, Gazipur
234	Scissors Garments Ltd.	2006	Uttarkhan, Uttara, Dhaka.
235	Sk. Fazlul Haque Moni Auditorium	2006	Gopalganj.
236	Southern Washing Ltd.(2 Storied)	2006	Savar, Dhaka
237	Square Pharmaceuticals Ltd (Pet Bottle)	2006	Pabna
238	Square Spinning Mills Ltd.	2006	Gazipur
239	Square Yarns Ltd. (Godown)	2006	Gazipur
240	Star Particle Board Mills Ltd.	2006	Dhaka
241	SPCL-GBBL Joint Venture	2006	
242	Viyellatex Rotor Mills Ltd.	2006	Gazipur
243	Wintex Utility Building	2006	Narsinghdi
244	Sea Tex Ltd. (Weaving)	2007	Gazipur
245	Paramount Textile Mills Ltd. (Factory Building)	2007	Sreepur, Gazipur
246	NGS Steel Industries Ltd.	2007	Chittagong
247	Nassa Spinning Mills	2007	Comilla EPZ
248	J.K. Spinning Mills Ltd.	2007	Codda, Nandan, Gazipur
249	Coats Bangladesh Ltd.	2007	Gazipur
250	City Group	2007	Rupgonj, Narayangonj
251	Akij Group (2-storied Factory Building)	2007	Ashulia, Savar
252	Bata Central Stores	2007	Tongi
253	Berger Paint Bangladesh Ltd. (Ware House)	2007	Savar, Dhaka
254	Coopers Bakery	2007	Savar, Dhaka
255	Evitex Polycot Ltd.	2007	Tangail
256	G.N Cotton Mills Ltd.	2007	Gazipur
257	G.N Spinning Mills Ltd.	2007	Gazipur
258	GE (Army) BOF Gazipur Cantonment	2007	Gazipur
259	Intimate Apparels Ltd. (3-storied Factory)	2007	KEPZ, Chittagong
260	Intramex Dyeing Ltd.	2007	Gazipur
261	Intramex Dyeing Ltd. (Dyeing Factory)	2007	Laximpura, Gazipur
262	Israq Spinning Mills Ltd.	2007	Gazipur
263	JK Yarn Dyeing Ltd.	2007	Safipur, Gazipur
264	Meghna Petroleum Ltd.	2007	Chittagong
265	Monowara Rotor Spinning Mills Ltd.	2007	Gazipur
266	Mosharaf Composite Textile Mills Ltd. Spinning shed	2007	Gazipur
267	Motin Spinning Mills Ltd. (Workshop Building)	2007	Gazipur
268	Malancho Holdings Ltd. (Power Plant)	2007	Dhaka EPZ & Chittagong EPZ

A SHORT LIST OF MSBPL VALUED CLIENTS YEAR WISE

SL. NO	NAME OF CLIENT & PROJECT	Year	LOCATION
269	New Shed-02 & Extension of RFL, Pran Group	2007	Ghorashal, Norshingdi
270	New Technology Engineering Works	2007	Chittagong Road, Narayangonj
271	Newtex Appareal Ltd. (4 Storied)	2007	Tangail
272	Quasem Drycells Ltd. (Godown Building)	2007	Dhaka
273	Rahimafrooze Batries Ltd.	2007	Savar, Dhaka
274	Regent Rotor Spinning Mills Ltd. (Factory Building)	2007	Chittagong
275	Regent Spinning Mills Ltd.	2007	Chittagong
276	Rising Group (Dyeing Factory)	2007	Manikgonj
277	Square Pharmaceuticals Ltd. (Hormone Building)	2007	Pabna
278	Square Pharmaceuticals Ltd. (Mezzanine Floor of SVP)	2007	Kaliakoir, Gazipur
279	Summit United Petroleum Co. Ltd.	2007	Kawran Bazar, Dhaka.
280	Sunman Group	2007	Chittagong
281	Regent Power Plant Ltd. (Power House)	2008	Chittagong
282	Mhadubi Lata Apartment.	2008	Uttara Model Town, Dhaka
283	Intramex Dyeing Ltd. (Dyeing Factory-2)	2008	Laximpura, Gazipur
284	Doreen Power Generation & System Ltd. (Power Plant)	2008	Narshingdi & Feni
285	Desh Energy (Power Plant)	2008	Sylhet
286	BRAC Training Centre (Vertical Extension)	2008	Savar, Dhaka
287	FKN Printing Mills Ltd (Factory Building).	2008	Narayangong
288	Gulshan Club Ltd.	2008	Dhaka
289	Shampa Flour Mills Ltd.	2008	Narayangonj
290	Malek Spinning Mills	2008	Dhaka
291	Liberty Group.(Factory Building)	2008	Chittagong
292	Sumit Alliance Port Ltd.	2008	Chittagong
293	Sumit Alliance Port Ltd. (Import Shed)	2008	Chittagong
294	Southern Service Ltd. (2-storied)	2008	Savar, Dhaka
295	Store & Dining Shed of Viyellatex Rotor Mills Ltd. Two Storied	2008	Gazipur
296	Tallu Spinning Mills Ltd.	2008	Mymensingh
297	Viyellatex Group (Washing Plant)	2008	Gazipur
298	Liberty Group.(Carton Shed)	2009	Chittagong
299	FKN Printing Mills Ltd (Factory Building).	2009	Savar, Dhaka.
300	French Fashion Ltd. (4- storied Garments Factory)	2009	Adamzee EPZ
301	French Fashion Ltd. (Knitting Shed)	2009	Adamzee EPZ
302	French Fashion Ltd. (Dyeing Shed)	2009	Adamzee EPZ
303	Berger Paint Bangladesh Ltd. (Power Plant)	2009	Chittagong
304	Dulal Brothers Ltd.(WTP & Boiler)	2009	Gazipur
305	Harvest Rich Limited.(2- Storied Factory Building)	2009	Narsingdhi
306	Intramex Knitwear Ltd.	2009	
307	Jamuna Power Plant Ltd. (55 MWT)	2009	Dhaka
308	Knit Asia (Dyeing Factory)	2009	Gazipur
309	Kohinoor Chemicals (Bangladesh) Ltd.	2009	Tejgaon I/A, Dhaka.
310	Norban Group (3 Storied Steel Building)	2009	Gazipur
311	Norban Group (Dyeing Shed)	2009	Gazipur
312	Renata Pharmaceutical Ltd. (2-storied)	2009	
313	RFL Plastic Stacking Cover Shed (Pran Group)	2009	Ghorashal, Norshingdi

A SHORT LIST OF MSBPL VALUED CLIENTS YEAR WISE

SL. NO	NAME OF CLIENT & PROJECT	Year	LOCATION
314	Ruthna Tea Factory (Viyellatex)	2009	Sylhet
315	Salek Spinning Mills Ltd (Ware House)	2009	Gazipur
316	Simco Spinning Mills Ltd	2009	Valuka, Mymensingh
317	Southern Clothing Ltd. (5- Storied Building)	2009	Asulia Dhaka
318	Viyellatex (General Ware House).	2009	Gazipur
319	Acorn Infrastructure Services Ltd. (100 MW Power Plant)	2010	Juldha, Chittagong
320	Atlas Green Pac	2010	Gazipur
321	Central Pharmaceuticals Ltd.	2010	Mirpur, Dhaka
322	Ena Properties Ltd. (Power Plant)	2010	Rajshahi
323	Ifad Multi Products (Factory)	2010	Ashulia, Dhaka
324	Malek (8-storied Building)	2010	Dhaka
325	KEPZ (Korean EPZ)	2010	Chittagong
326	Power Pac Power Plant Ltd.(100 MW) Shed	2010	Keranigonj, Dhaka
327	Seven Circle (Bangladesh) Ltd. Edible oil	2010	Khulna
328	Sikder Group (5- storied flying club)	2010	Dhaka
329	Sikder group (Air Hanger Shed)	2010	Dhaka
330	Sunman Group (Weaving Factory)	2010	Iswardi, Pabna
331	East Port Ltd. (3-storied Factory)	2011	Comilla EPZ
332	AKNV International Ltd. (Factory Building)	2011	Ishwardi, Pabna
333	Concord Consortium Ltd. (Power Plant)	2011	Codda, Gazipur
334	Gerico-Bangladesh Agro Industrial Corporation Ltd.	2011	Kaliakoir, Gazipur
335	Kashem Lamps Ltd.	2011	Gazipur
336	Nakano International Ltd.	2011	Ishardi EPZ, Pabna
337	Padma Ltd. (Factory Building)	2011	Narayangonj
338	YKK Bangladesh	2011	Gazipur
339	Rangs Properties Ltd. (15-storied Building)	2011	Dhaka
340	Roulin BD Ltd.	2011	Ishwardi EPZ, Pabna
341	Southern Washing Ltd.(3 Storied)	2011	Savar, Dhaka
342	Asian Paints Bangladesh Ltd.	2012	Bahadurpur, Gazipur
343	BRAC (Aarong Centre)	2012	Tejgaon, Dhaka
344	Max Automobile Ltd. (Dhaka-Chittagong Railway Road)	2012	Dhaka
345	Rahimafrooze Superstore Ltd. (Agora)	2012	Tejgaon, Dhaka
346	Toma Construction & Company Ltd. (Railway Bridge)	2012	Panchagar
347	Partex Star Group (Dormitory Building)	2012	Kanchpur, Narayangonj
348	DBL Group (5-storied Store Building)	2012	Kashimpur, Gazipur
349	American International University of Bangladesh, Dairy firm	2013	Sreepur, Gazipur
350	American International University of Bangladesh, Building-C	2013	Sreepur, Gazipur
351	Berger Paint Bangladesh Ltd. (Factory Building)	2013	Savar, Dhaka
352	BRAC (Aarong Centre)	2013	Dhaka
353	BRAC (Gulshan Outlet Relocation Project)	2013	Gulshan, Dhaka.
354	BRAC (4 Steel Shed BEEL)	2013	Tongi, Gazipur
355	BRAC (VIP Hostel)	2013	Gazipur
356	DBL Group (Thermal Building)	2013	Kashimpur, Gazipur
357	High Tech Engineers	2013	CEPZ, Chittagong
358	Imperial Composite Fabrics Ltd. (Ware House)	2013	Tongi

A SHORT LIST OF MSBPL VALUED CLIENTS YEAR WISE

SL. NO	NAME OF CLIENT & PROJECT	Year	LOCATION
359	Intramex Textile Ltd. (Factory Building)	2013	Gazipur
360	Ispahani Tea Ltd. (2-storied Ware House)	2013	Sreemongal, Moulovi Bazar
361	Jennys Shoe Ltd. (Roof Top)	2013	Shayampur, Kadamtali, Dhaka
362	Karnaphuli Fertilizer Co. (KAFCO) (DEG Shelter)	2013	Rangadia, Anowara, Chittagong
363	Mahin Group, Tazrin Weaving (2-storied)	2013	Narsingdi
364	Partex Jute (Ware House)	2013	Dobra, Faridpur
365	Pahartali Textile Mills Ltd. (Spinning Mill)	2013	Pahartali, Chittagong
366	Rajlanka Power Co. Ltd. (Power Plant, FTH, Unloading)	2013	Natore
367	Bangladesh Textile & Fiber Industries Ltd.	2013	Comilla EPZ, Comilla
368	Magnus Power Co. Ltd.	2013	Basila, Mohammadpur, Dhaka
369	Paragon Group (6-storied Sweater Factory)	2013	Gazipur
370	Pasha Pole Ltd. (Factory Building)	2013	Sreepur, Gazipur
371	United Ashugonj Energy Ltd. (200 MW PP & Utility Building)	2013	Ashugonj, B.Baria
372	PRAN-RFL Group (DPL 2-storied Ware House)	2013	Matiara, Comilla
373	Bangladesh Petro Chemical Ltd. (Main Factory)	2013	Murapara, Rupgonj, Narayanganj
374	Sunman Group (Weaving Factory)	2013	Ishwardi EPZ, Pabna
375	Ispahani Food Ltd. (PEB Shed)	2014	Konabari, Gazipur.
376	Western Agro Ltd. (Factory Building)	2014	Sherpur, Bogra
377	Pakiza Group (Mom Tex-2)	2014	Narsingdi
378	Army Golf Club (Civil & Steel)	2014	Dhaka Cantonment, Dhaka
379	Nippon & McDonald Steel Industry (Civil & Steel)	2014	Fouzderhat, Chittagong
380	Jessore IT Park (MTB Building)	2014	Jessore
381	Jessore IT Park (Dormitory Building)	2014	Jessore
382	Bangladesh Navy (Air Hanger) Civil & Steel	2014	Chittagong
383	Lakhdhanavi Bangla Power Company	2014	Jangalia, Comilla
384	Paramount Textile Ltd. (Weaving Extention-2)	2014	Gilarchala, Sreepur, Gazipur
385	Ibn Sina Medical College & Hospital (14 storied Steel Building with 3-storied RCC Basement)	2014	Kalyanpur, Dhaka
386	Franco German Embassy (National Development)	2014	Baridhara, Dhaka
387	American Dairy Ltd. (Bull Shed)	2014	Sreepur, Gazipur
388	Bangladesh Railway (West)	2014	Rajshahi
389	Partex Jute Mill (Ware House Extension)	2014	Dobra, Faridpur
390	Pipe Lines Ltd. (Cevron)	2014	Sylhet
391	Impress Group (2-storied Building & Lift core)	2014	Jatrabari, Dhaka
392	Power Pac Mutiara, Power Plant Ltd.(100 MW)	2014	Shahpur, Jamalpur
393	Pakiza Group (New Shed Mom Tex-2)	2014	Narsingdi
394	Mahin Group (Tazrin Weaving, Preparatory Shed)	2014	Narsingdi
395	United Ashugonj Energy Ltd. (Turbine Hall)	2014	Ashugonj, B.Baria
396	Khulna Shipyard Ltd. (New Store Shed)	2015	Khulna
397	Jessore IT Park (MTB Building) 4th-14th floor	2015	Jessore
398	Jessore IT Park (Dormitory Building) 6th-12th floor	2015	Jessore
399	Sena Kallayan Sangsta (LPG Project)	2015	Mongla, Khulna
400	ISOLUX (365 MW CCPP)	2015	Shiddhirganj, N.Gonj.
401	National Bank Ltd. (12-storied NBL Twin Tower)	2015	Dhaka
402	Far East Group (Spinning & Dormitory Building)	2015	Habiganj
403	Ifco Dev. (United Group) Canopy, Cinema Hall, Fascade	2015	Airt Port, Dhaka

A SHORT LIST OF MSBPL VALUED CLIENTS YEAR WISE

SL. NO	NAME OF CLIENT & PROJECT	Year	LOCATION
404	Shomaher Sweater Ltd. (6-storied Factory Building)	2015	Kaliakoir, Gazipur
405	YKK Bangladesh (2nd floor Mezzanine Phase- 2 & ETP Pipe Rack)	2015	Dhaka EPZ
406	Dhaka Club Ltd. (2-storied Modern Multistoried Building)	2015	Ramna, Dhaka
407	United Group (Lube Oil Blending Plant)	2015	Mongla, Khulna
408	Pakiza Group (Mom Tex Compressor Shed)	2015	Narsingdi
409	SF Washing Ltd.	2015	Katchpur, Narayanganj
410	Mosharaf Composite Mills Ltd. (Shed Building)	2015	Gazipur
411	BRB Cable Ltd. (Extra High Voltage Power Cable Building)	2015	BSCIC, Kushtia
412	TR, Spain (Ashuganj 450 MW PP)	2015	Ashuganj, B.Baria
413	Hamid Group (2-storied New Weaving Shed)	2015	Narsingdi
414	Bangladesh Army (Tank Repair Shed)	2015	Rajendrapur Cantt., Gazipur
415	Partex Group (Amber Paper Mill)	2015	Katchpur, Narayanganj
416	Alokito Hridoy School	2015	Mirzapur, Tangail
417	Eco Tex Group (MBM Building)	2015	Gazipur
418	SMC Group (Diaper & Sanitary Napkin Factory)	2015	Comilla
419	United Group (Workshop Building)	2015	Satarkul, Dhaka.
420	Shanin Group=Shantex (Pvt.) Ltd. (Weaving & Dyeing Factory)	2016	Ashulia, Dhaka
421	Debonair Padding & Quilting Solution Ltd. (Main Factory)	2016	Valuka, Mymensingh
422	Pakiza Group (Godown-2)	2016	Narsingdi
423	Partex Group (Amber Ware House)	2016	Banglabazar, Sreepur, Gazipur
424	YKK Bangladesh (2nd Factory)	2016	Dhaka EPZ
425	Mahen Dizayn Etiket (BD) Unit-2 Ltd.	2016	Adamzee EPZ, Narayanganj
426	Partex Group (RC Cola) Ware House	2016	Banglabazar, Sreepur, Gazipur
427	TR, Spain (Ashuganj 450 MW PP) Ware House	2016	Ashuganj, B.Baria
428	Ispahani Summit Alliance (CFS) 1 Shed	2016	Pahartali, Chittagong
429	Navy (Issa Kha Belman Air Hanger)	2016	Chittagong
430	Army (Air Hanger) Steel & Civil work	2016	Dhaka Cantt.
431	Joydebpur-Mymensingh Road Project	2016	Joydebpur
432	BRB Cable Ltd. (Super Enamel Factory Building)	2017	BSCIC, Kushtia
433	Bashundhara Multi Food Products Ltd. (Chemical Ware House-1)	2017	Pangaon, Konda, South Keranigonj, Dhaka
434	Bashundhara Multi Food Products Ltd. (PET Ware House)	2017	Pangaon, Konda, South Keranigonj, Dhaka
435	Stitch Right (Factory Building)	2017	Gazipur
436	Shomaher Sweater Ltd. (5th Floor Roof)	2017	Gazipur
437	L&T (450 MW) Power Plant	2017	Bibiyana, Sylhet
438	Shomaher Sweater Ltd. (Rectifitting work)	2017	Gazipur
439	Shah Cement (Bag Filter Building)	2017	Mukterpur, Munshiganj.
440	Fair Electronics Limited (Samsung) CKD Building	2017	Kamagaon, Putai Bazar, Shibpur, Narsingdi
441	Partex Petro Ltd. (4-storied Dormitory Building)	2017	Karnaphuli, Chittagong
442	Hi-tech Park Sylhet (Electronics City) 3-storied Admin Building	2017	Companiganj, Sylhet
443	OSJI JV (IHI-Infrastructure System Co. Ltd.) Katchpur, Meghna, Gumti 2nd Bridges	2017	Katchpur, Meghna, Gumti 2nd Bridges
444	YKK Bangladesh Ltd. (Phase-4)	2017	Dhaka EPZ, Savar
445	Amber Pulp & Paper (Cutting Section)	2017	Katchpur, Narayanganj
446	Paragon Group (Feed Mill)	2017	Chotokomoldoho, Mirersarai, Chittagong
447	BRB Cable Ltd. (1-storied Shed Building)	2017	BSCIC, Kushtia
448	Dhaka Mass Rapid Transit Development (DMRTD), CP-03/04 (Metro Rail Project)	2017	Dhaka

A SHORT LIST OF MSBPL VALUED CLIENTS YEAR WISE

SL. NO	NAME OF CLIENT & PROJECT	Year	LOCATION
449	LTL Global Ltd. (100 MW Power Plant, FTH, Control Room, Black Stater)	2017	Juldha, Chittagong
450	Epillion Knitex Ltd. (Extension Building)	2017	Bahadurpur, Gazipur
451	Epillion Knitex Ltd. (Boiler Shed)	2017	Bahadurpur, Gazipur
452	Amber Pulp & Paper (Boiler Shed)	2017	Rupgonj, Narayanganj
453	Academic Building (North & South) North South University	2018	Bashundhara Campus, Dhaka
454	Himalayan Pre-fabricated Ltd. (Everest College Building)	2018	Biratnagar, Nepal
455	Bangladesh University of Professionals (BUP) Renovation and Re-arrangement of Class Rooms at Academic Building	2018	Mirpur, Dhaka
456	Single storied Shed Glass & Ceramic Engineering Department, BUET	2018	Dhaka
457	National Tea Company Ltd. (3-storied Factory Building)	2018	Sylhet
458	Roof Extension (North & South) North South University	2018	Bashundhara Campus, Dhaka
459	Library Extension (North & South) North South University	2018	Bashundhara Campus, Dhaka
460	Ware House, Partex Tissue, Partex Star Group	2018	Vhulta, Rupgonj, Narayanganj
461	Chemical Factory, Robintex Group	2018	Rupgonj, Narayanganj
462	Ziska Pharmaceuticals Ltd. (Soft Gel Factory)	2018	Karol Surichala, Kaliakoir, Gazipur
463	Bangladesh Techno city Ltd. (1-storied Building)	2019	Gazipur
464	Dhaka Mass Transit Company Limited (DMTCL), CP 05	2019	Dhaka
465	Ziska Pharmaceuticals Ltd. (Ware House)	2019	Karol Surichala, Kaliakoir, Gazipur
466	JPE Engineering Corporation (Gumoti 2nd Bridge)	2019	Comilla
467	Paragon Group (Footware Building)	2019	Savar, Dhaka
468	Shanta Group (Woman & Child Health)	2019	Savar, Dhaka
469	Bangladesh Navy (Air Hangar)	2019	Chattogram
470	Dhaka Boat Club Limited	2019	Asulia Dhaka
471	Asian Paints Bangladesh Ltd.	2019	BEZA, Mirshorai, Chattogram
472	Dhaka Mass Transit Company Limited (DMTCL), CP 06	2020	Dhaka
473	Shanta Group (Connecting Bridge)	2020	Tejgaon, Dhaka
474	Bangladesh Navy (External Water Supply)	2020	Chattogram
475	Bangladesh Navy (External Electric)	2020	Chattogram
476	Bangladesh Navy (Lighting Conductor)	2020	Chattogram
477	Paragon Poultry Limited	2020	Vabanipur, Gazipur
478	Fabrication & Erection of Structural Steel Work for Meghnaghat 718MW CCPP Power Plant	2020	Meghnaghat, Narayanganj
479	Fabrication & Erection of Structural Steel Work for Hazrat Shahjalal Int'l Airport Expansion Project	2020	Airport, Dhaka
480	Bangladesh Technosity Limited	2020	Gazipur
481	Ziska Pharma Chemical Storage Shed	2021	Shafipur, Gazipur
482	Ziska Pharma Cepha and Penicillin connecting bridge	2021	Shafipur, Gazipur
483	Connecting Corridor for Embassy of Japan	2021	Baridhara, Dhaka
484	Navana Pharmaeuticals Ltd. Steel structure Warehouse	2022	Rupgonj, Narayanganj
485	Ziska Pharmaceuticals Ltd. Steel structure of ETP Building	2022	Shafipur, Gazipur
486	Ziska Pharmaceuticals Ltd. Steel structure of Boiler house	2022	Shafipur, Gazipur
487	OTJ Joint Venture Steel Superstructure Fabrication for Bridge No.8 (Type A) Italian-Thai Development	2022	Dhaka
488	Construction of viaducts from Motijheel to Komlapur and construction of komlapur elevated station	2023	Dhaka



Contacts

Head Office

Shanta Western Tower (Level 11)
186, Bir Uttam Mir Shawkat Ali Sarak
Tejgaon Industrial Area
Dhaka-1208.
Phone: +880-2-8878748-51
Fax: +880-2-8878752

Factories

148-156/17, Bahadurpur
P.O. Bhawal Mirzapur
Joydevpur, Gazipur, Bangladesh

Plot 1/5, 7 No. Sonagazi Sadar,
BSMSN, BEZA, Mirsharai
Chattogram, Bangladesh.